

Project Systems

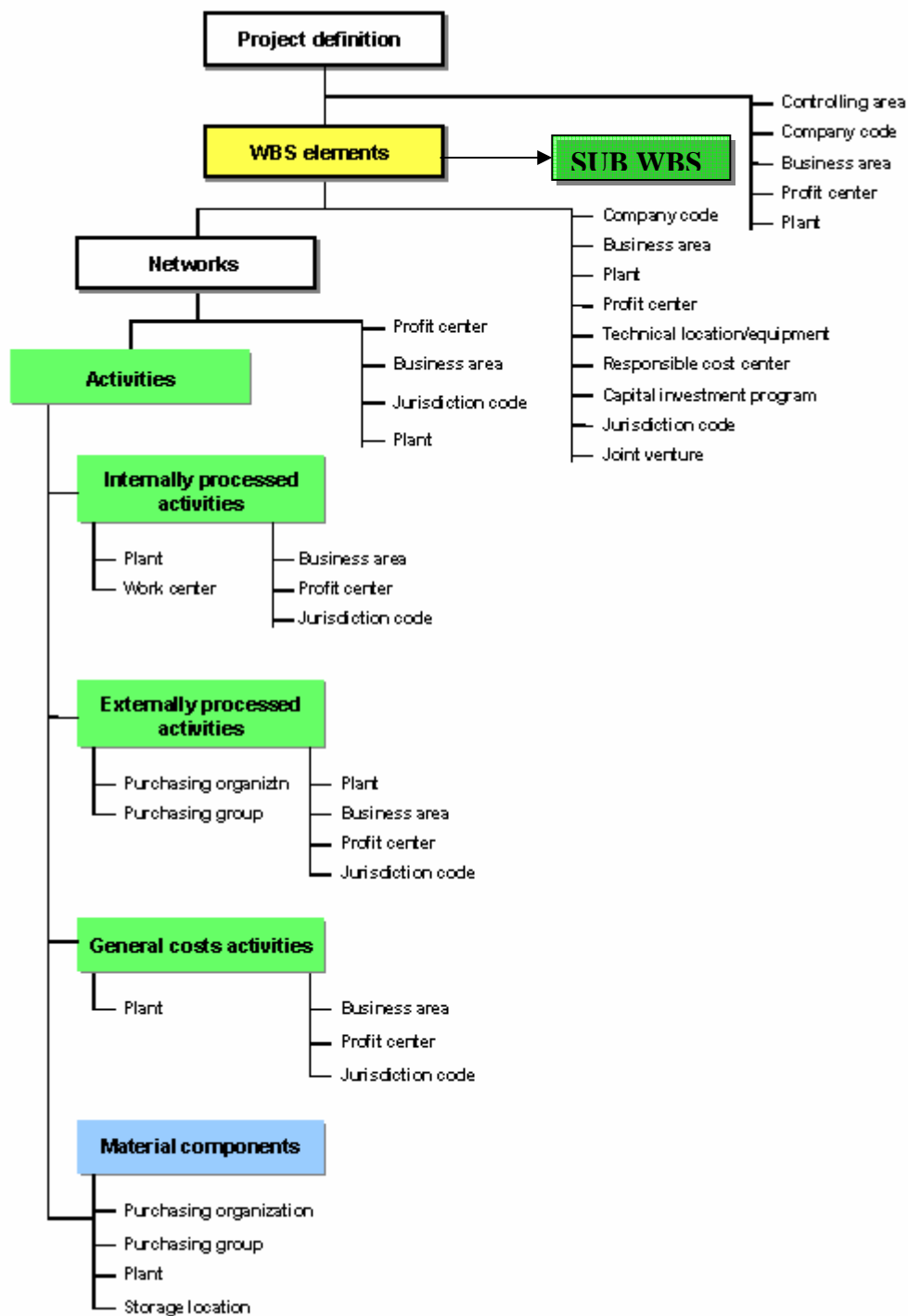
Hierarchical structure and Table links

Swarna S

Introduction

This document provides the basic hierarchical structure of the Project Systems module in SAP .The document also defines the terminologies used frequently in the Project Systems module. Also the tables used in the module with the links are diagrammatically presented which will be useful to technical people for customised development.

Hierarchical Structure of the Project Definition



A few Definitions of the terminologies used in PS module

Project:

The project definition is the binding framework for all organizational elements within a project.

Work Break down Structure:

With a work breakdown structure you can divide the project into useful steps, specify fixed or "basic" dates, specify the work involved, and determine project costs.

The individual levels of the hierarchy in a work breakdown structure enable you to organize a project into steps.

Work Break Down Structure Element (Sub WBS):

You can further break down these steps into individual elements

Maximum steps supported are 99.

Network:

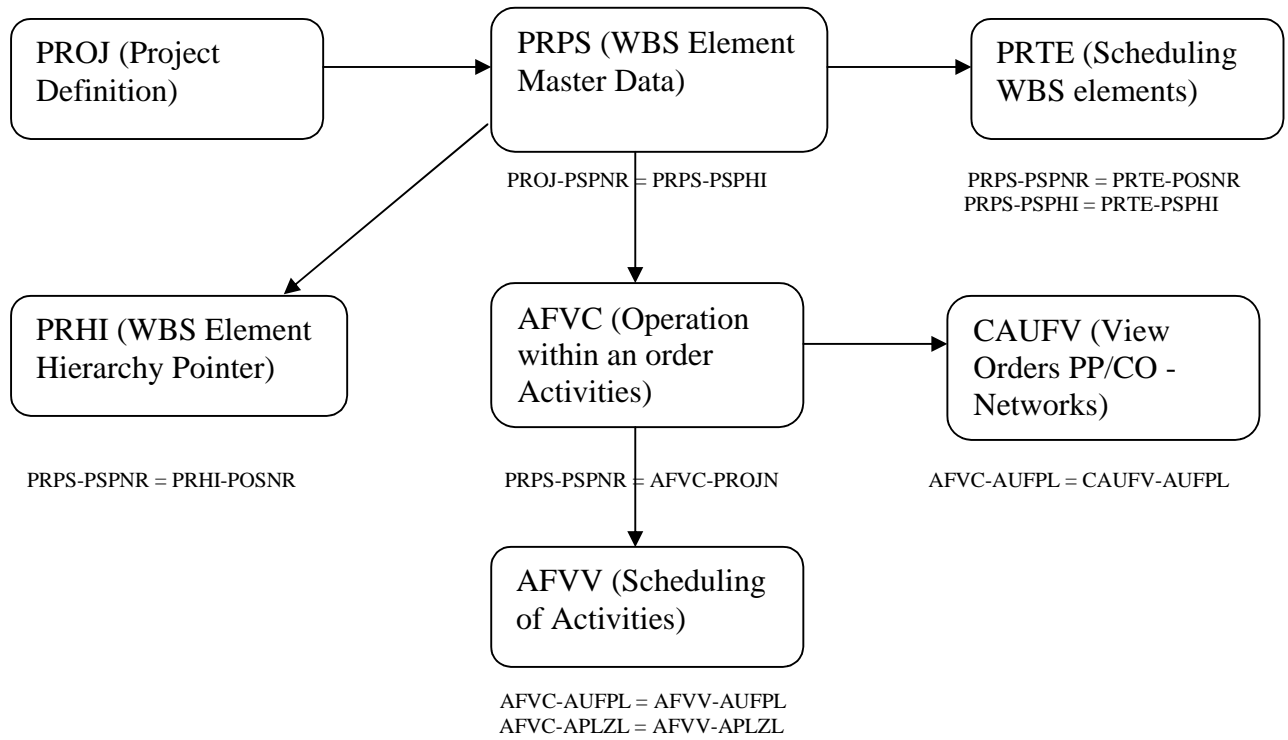
It is a special type work order on which cost can be planned, controlled and monitored.

Activities:

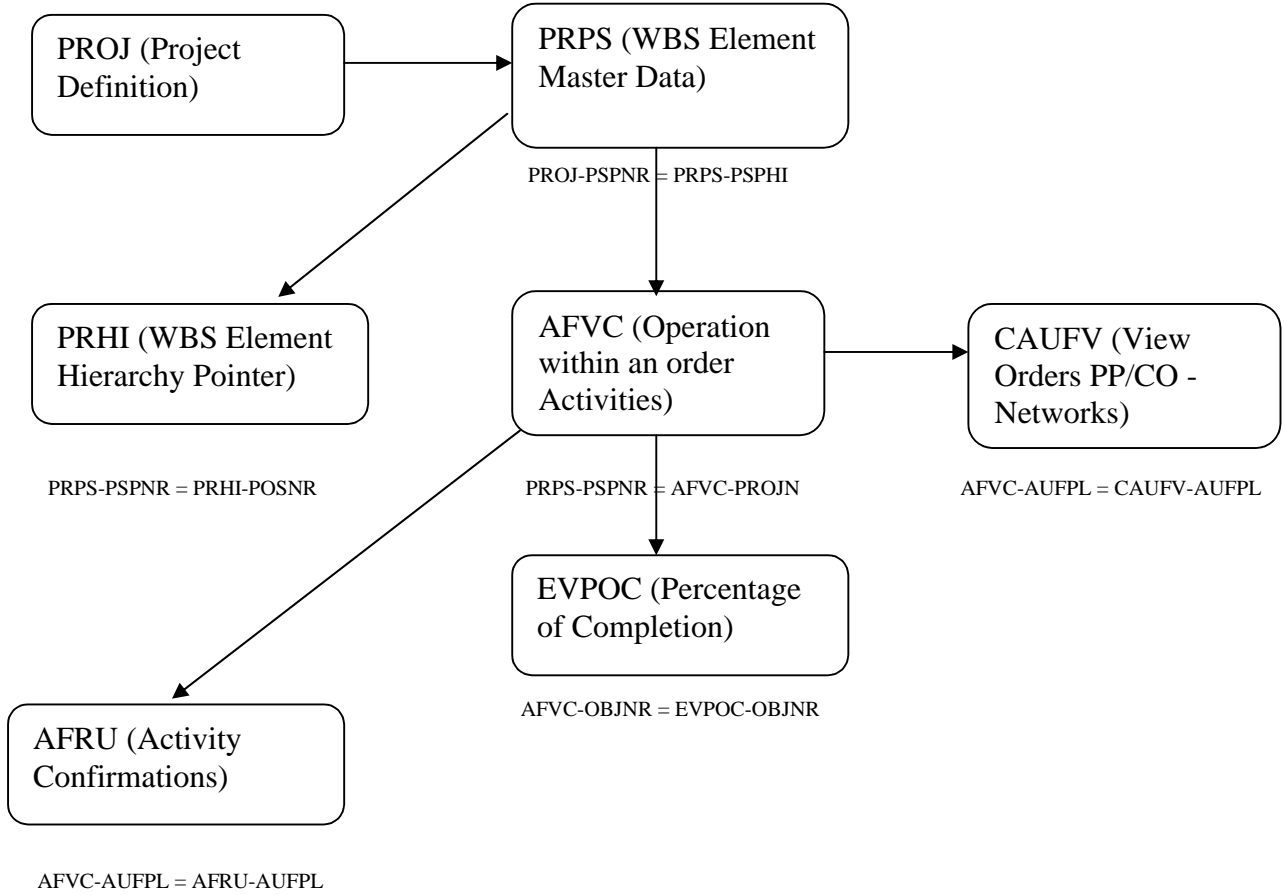
These are the actual tasks that are to be executed for the completion of the project.

Frequently used Tables in Project Systems Module:

Scheduling Tables:

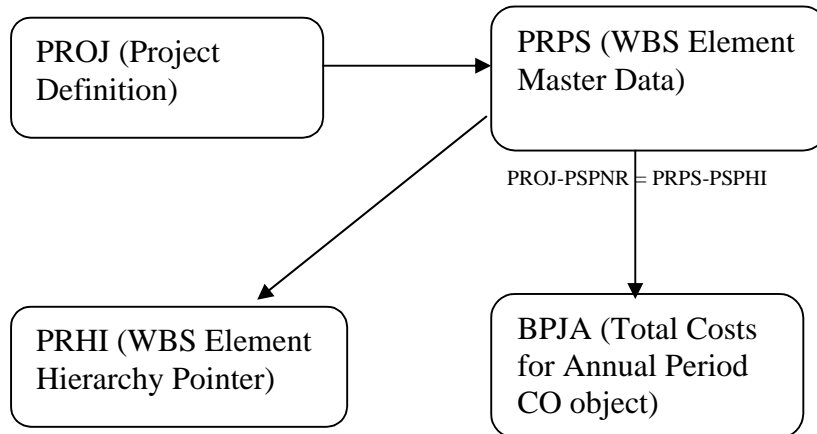


Percentage of Completion Tables:



Costs Tables in PS:

Budget / Revenue/Planned Costs:



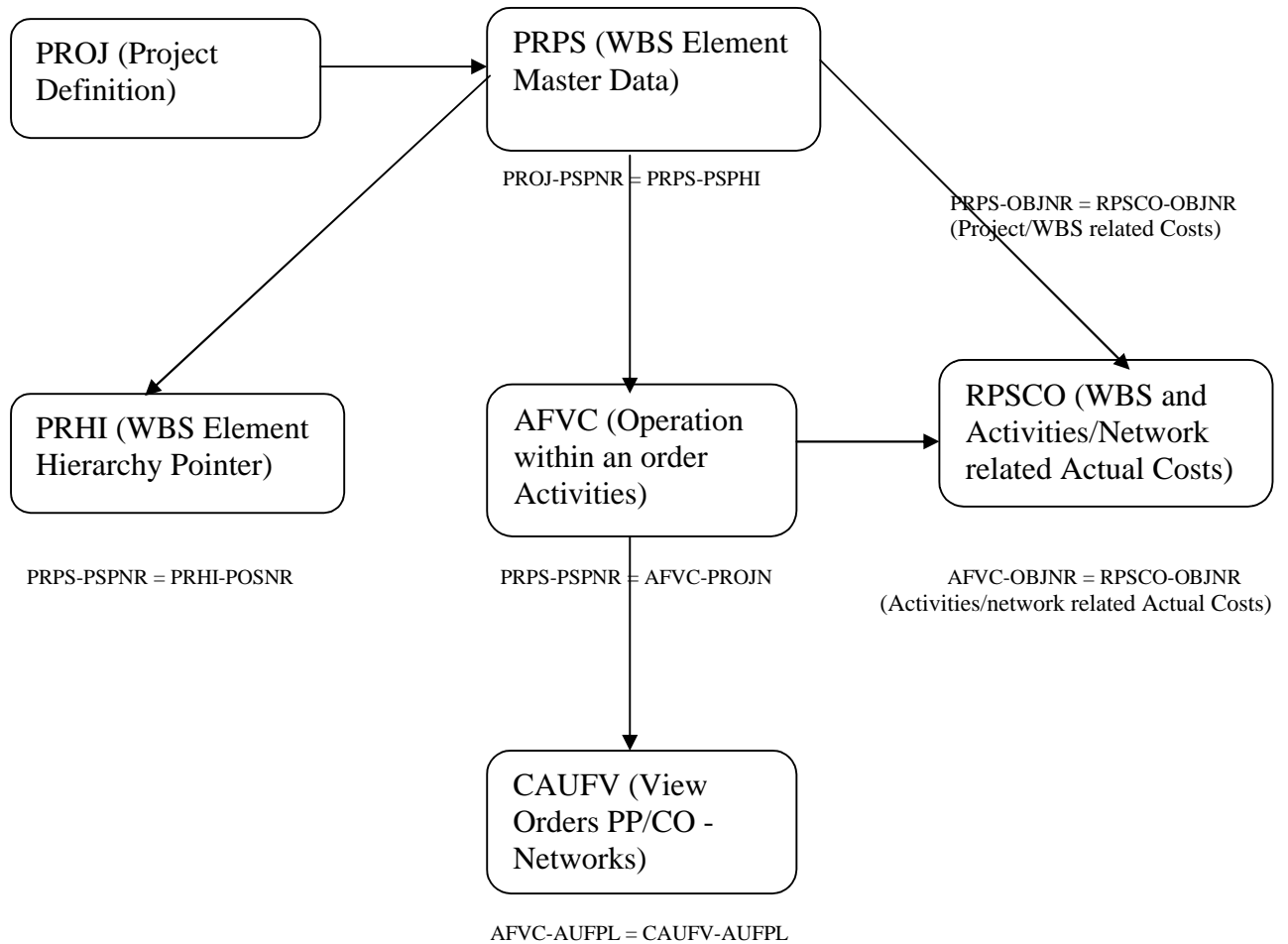
PRPS-PSPNR = PRHI-POSNR

PRPS-OBJNR = BPJA-OBJNR

In all these costs only the value of the field VORGA (Budget/Planning Category) and is changed as per the requirement. These values change as per the configuration too so this has to be taken into consideration

VORGA	Category
KSTP	Planned Cost
KSTR	Planned revenue
KBUD	Budget
KNB0	Supplementary Budget

Actual Costs:



Here in Actual Costs another important feature is that The Field VORGA in the RPSCO table should contain all the business transactions pertaining to CO objects from COIE to COIN and the Value of ACPOS (which is configured through SPRO and value may change accordingly) is not of Revenue category and WRTTP ,value type field takes a standard value of 4 for Actual costs.

Material Assignment Tables:

